

The all-in-one handheld measuring instrument for field work – 100 % functionality.

R&S®FSH – ten measurement modes in one instrument.

- Spectrum analysis
- Vector network analysis
- Cable and antenna analysis
- Wireless standards demodulation
- Receiver mode and channel scanner
- Interference hunting
- Geotagging
- Isotropic antenna measurements (EMF)
- Power measurements
- Vector voltmeter

Versatile, field-proven and easy-to-use

The R&S®FSH provides all functions that a service technician or an installation and maintenance team need to solve their daily tasks – from maintaining or installing transmitter systems, component testing and assessing signal quality in wireless communications to public safety and aerospace and defense applications. It is also ideal for basic applications in the lab.

Benchtop performance in handheld format

- Frequency range from 9 kHz to 3.6 GHz / 8 GHz / 13.6 GHz / 20 GHz
- High sensitivity (DANL = –165 dBm typ. with preamplifier)
- Best level measurement accuracy in its class, typ. 1 dB
- High measurement speed with FFT sweep mode
- High-precision frequency reference (R&S®FSH-Z114)

More info: www.rohde-schwarz.com/product/fsh

Service that adds value

- ▮ Worldwide
- ▮ Local and personalized
- ▮ Customized and flexible
- ▮ Uncompromising quality
- ▮ Long-term dependability

Regional contact

- ▮ Europe, Africa, Middle East | +49 89 4129 12345
customersupport@rohde-schwarz.com
- ▮ North America | 1 888 TEST RSA (1 888 837 87 72)
customer.support@rsa.rohde-schwarz.com
- ▮ Latin America | +1 410 910 79 88
customersupport.la@rohde-schwarz.com
- ▮ Asia/Pacific | +65 65 13 04 88
customersupport.asia@rohde-schwarz.com
- ▮ China | +86 800 810 8228/+86 400 650 5896
customersupport.china@rohde-schwarz.com

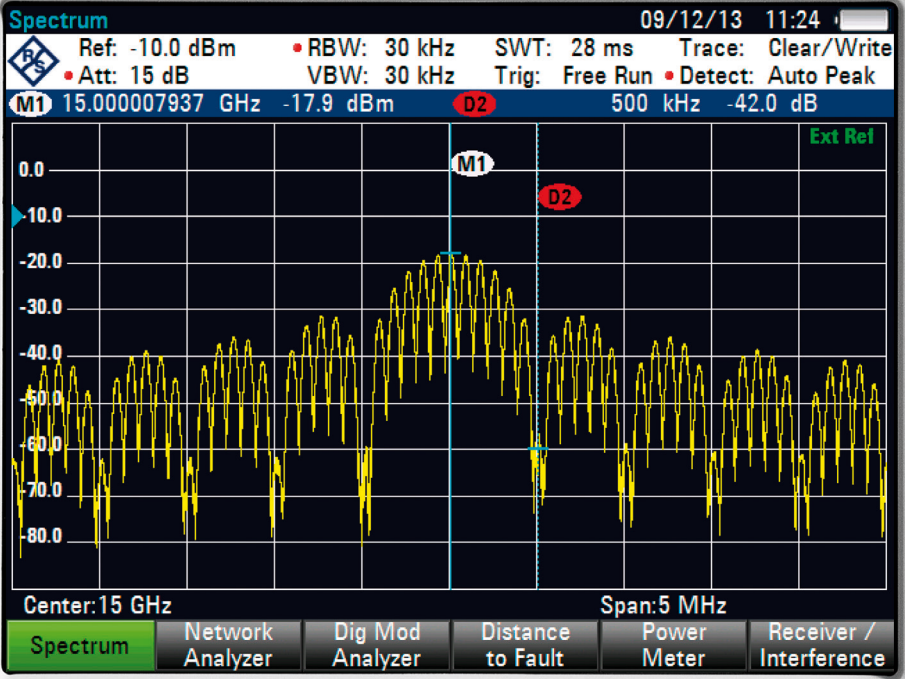
www.rohde-schwarz.com

R&S® is a registered trademark of Rohde & Schwarz GmbH & Co. KG
Trade names are trademarks of the owners
PD 3606.9479.62 | Version 01.01 | December 2013 (mc)
R&S®FSH The-all-in-one handheld spectrum analyzer
© 2005 Rohde & Schwarz GmbH & Co. KG
81671 München, Germany | Subject to change



3606947962

ROHDE & SCHWARZ FSH 20 · SPECTRUM ANALYZER · 9 kHz ... 20 GHz



R&S® FSH Handheld spectrum analyzer

Versatile, field-proven
and easy-to-use —
the R&S®FSH offers
benchtop performance
in a handheld format.



Versatile

Spectrum analysis

- ▮ Connected and over-the-air (OTA) measurements
- ▮ Channel power, occupied bandwidth (OBW), adjacent channel leakage ratio (ACLR), spectrum emission mask (SEM), spurious emission mask, etc.
- ▮ Built-in preamplifier
- ▮ Models with built-in tracking generator and VSWR bridge

Wireless standards demodulation

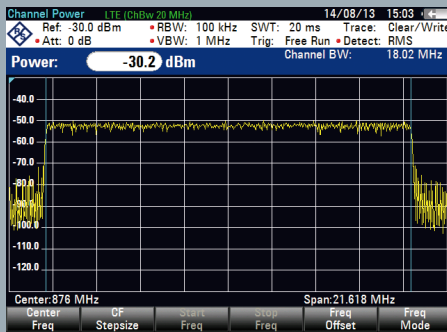
- ▮ Demodulation and analysis of GSM/EDGE, WCDMA/HSDPA/HSPA+, LTE, TD-SCDMA/HSDPA, CDMA2000® and 1xEV-DO base station signals
- ▮ 20 MHz demodulation bandwidth for LTE signals

Interference hunting

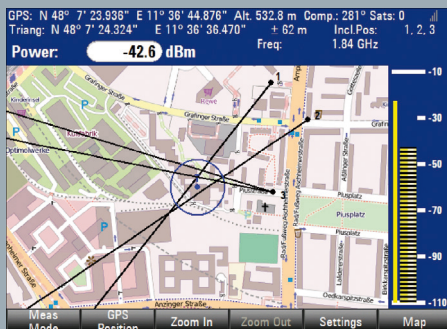
- ▮ Interference hunting with map-based triangulation technique and acoustic level indication (tone feature)
- ▮ Spectrogram
- ▮ R&S®HL300 handheld directional antenna with built-in GPS and electronic compass

Geotagging

- ▮ Map-based field strength coverage measurements
- ▮ Data export to Google Earth



Channel power measurement



Interference analysis

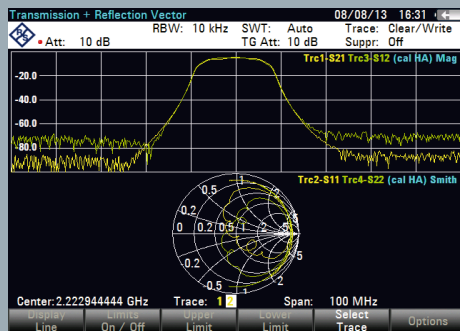


Vector network analysis

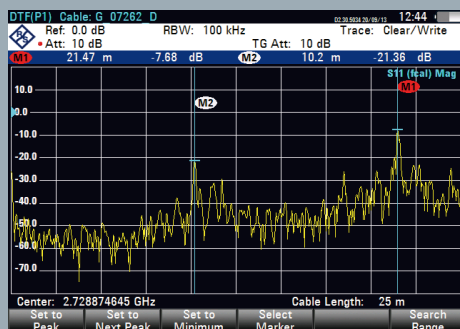
- ▮ All S-parameters, magnitude and phase
- ▮ Models with built-in DC bias supply and current measurement
- ▮ 100 dB typ. dynamic range
- ▮ High accuracy calibration
- ▮ Up to four S-parameters on one screen
- ▮ Smith chart and many other result formats

Cable and antenna analysis

- ▮ Return loss, distance-to-fault (DTF), cable loss measurements
- ▮ Standard factory and easy one-port calibration, no time-consuming calibration procedure
- ▮ VSWR bridge and tracking generator up to 8 GHz
- ▮ Vector voltmeter for cable trimming



Vector network analysis



Distance-to-fault measurement

Receiver mode and channel scanner

- ▮ EMC precompliance measurements
- ▮ Predefined channel tables for mobile communications standards and TV transmitters

Power measurements

- ▮ 0.1 dB level accuracy with external power sensors
- ▮ Simultaneous measurement of transmit and reflected power with directional power sensor

Isotropic antenna measurements (EMF)

- ▮ Direction-independent field strength measurement in the 9 kHz to 6 GHz range



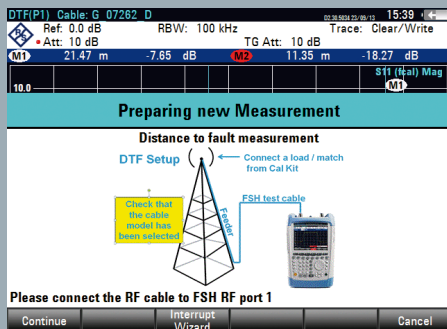
Field-proven

- Compact size and low weight (3 kg / 6.6 lb)
- Rugged, splash-proof housing, well-protected connectors, no vents or fans
- Color display – easy to read even under poor lighting conditions, monochrome mode for strong sunlight
- Easy-to-replace battery (up to 4.5 hours)
- Temperature range –10 °C to +55 °C
- MIL-PRF-28800F class 2
- Wide range of accessories such as carrying holster, soft carrying bag and hard case

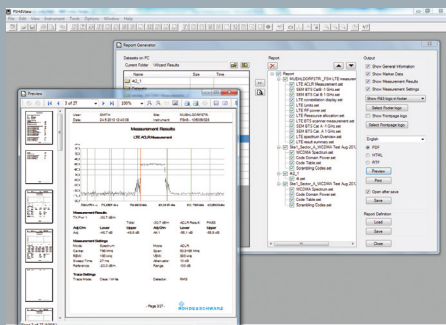


Easy-to-use

- ▮ User-configurable, automatic test sequences (wizard)
- ▮ Test report within a few seconds with the R&S®FSH4view report generator
- ▮ Easy-to-reach function keys
- ▮ Direct access keys for frequently used functions
- ▮ Rotary knob with Enter button
- ▮ User-configurable softkeys
- ▮ Easy configuration of instrument setup
- ▮ Quick file naming
- ▮ Multilingual user interface



R&S®FSH wizard



R&S®FSH4view test report

