

# R&S® TRUSTED OBJECTS MANAGER

## Specifications

### Description

R&S®Trusted Objects Manager is the central management appliance for Rohde & Schwarz Cybersecurity products.

The management system allows central and easy-to-use administration of products like R&S®Browser in the Box, R&S®Trusted VPN, R&S®Trusted Disk, R&S®Trusted Identity Manager and R&S®Trusted VPN Client. One single installation of R&S®Trusted Objects Manager is sufficient to manage all products. R&S®Trusted Objects Manager can manage, depending on the product, up to 50,000 clients. A connection to different LDAP directory services, like Microsoft Active Directory, Lotus Domino, Novell eDirectory or OpenLDAP, ensures a seamless integration in small and large networks. Users and groups can be imported from existing LDAP structures.

Reliable and fail-safe operation can be assured by connecting one or more additional R&S®Trusted Objects Managers as standby instances.

### Technical Specifications

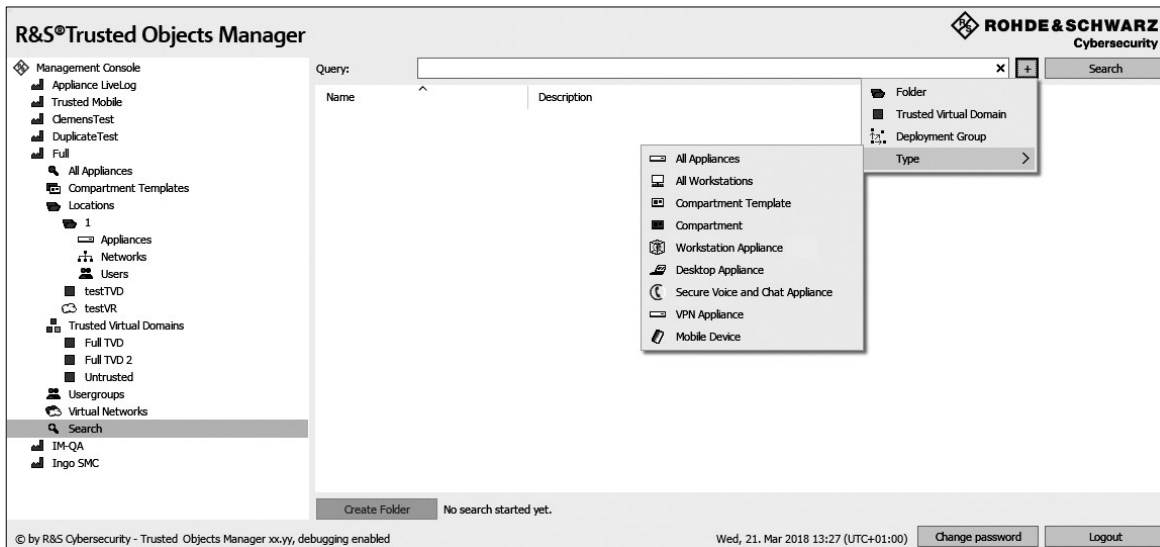
R&S®Trusted Objects Manager M	
CPU	1 x Intel Xeon E5-2620 v4 @ 2.1 GHz, 8 physical CPU cores with AES New Instructions (AES-NI)
RAM	16 GB
HDD	2 x 1 TB SATA in RAID 1 mode
Ethernet interfaces	2 x GigE
TPM	TPM specification 1.2, EAL4+ certified
Dimensions	19" Rack Mount 4.32 x 43.47 x 74.67 cm
Power supply	2 x 500 W (redundant)
Operating temperature	<ul style="list-style-type: none"><li>• 10 °C to 35 °C (50 °F to 95 °F) at sea level with an altitude derating of 1.0 °C per every 305 m (1.8 °F per every 1000 ft) above sea level to a maximum of 3050 m (10,000 ft), no direct sustained sunlight</li><li>• Maximum rate of change is 20 °C / h (36 °F / h)</li></ul>
Operating humidity	<ul style="list-style-type: none"><li>• Minimum to be the higher (more moisture) of -12 °C (10.4 °F) dew point or 8 % relative humidity</li><li>• Maximum to be the lower (less moisture) of 24 °C (75.2 °F) dew point or 90 % relative humidity</li></ul>



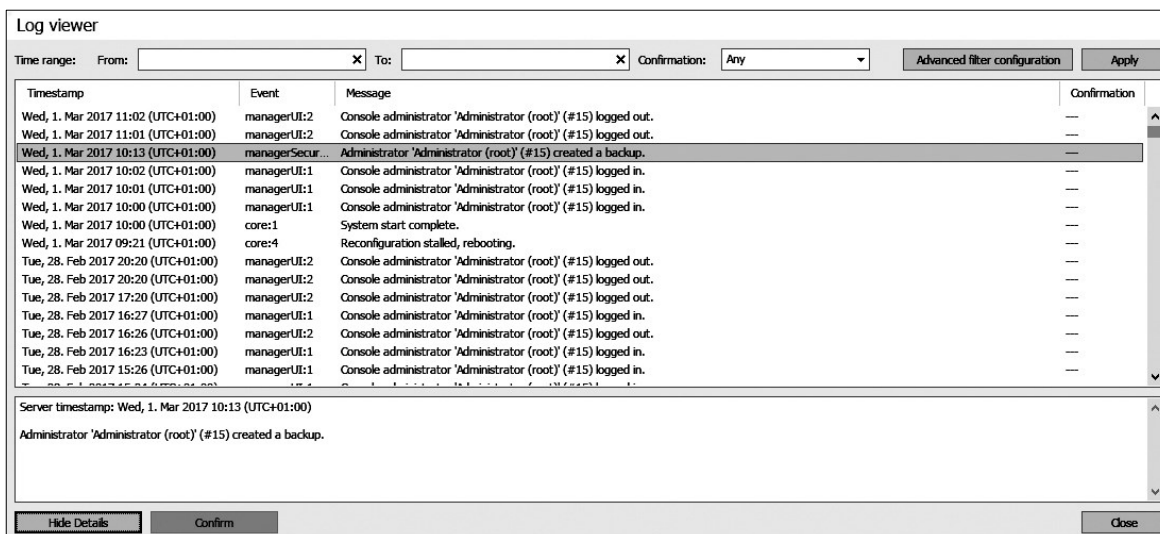
Data sheet | Version 03.00

**ROHDE & SCHWARZ**  
Make ideas real





The administration interface with objects arranged in folders featuring the search mode.



Events logged by R&S Trusted Objects Manager or by any product can be inspected centrally in the log viewer.

**Rohde & Schwarz Cybersecurity GmbH**  
Muehldorfstrasse 15 | 81671 Munich, Germany  
Info: +49 30 65884-222  
Email: cybersecurity@rohde-schwarz.com  
www.rohde-schwarz.com/cybersecurity

**Rohde & Schwarz GmbH & Co. KG**  
www.rohde-schwarz.com



R&S® is a registered trademark of Rohde & Schwarz GmbH & Co. KG  
Trade names are trademarks of the owners  
PD 5215.2366.22 | Version 03.00 | February 2022 (sch)  
R&S®Trusted Objects Manager  
Data without tolerance limits is not binding | Subject to change  
© 2019 - 2022 Rohde & Schwarz Cybersecurity GmbH | 81671 Munich, Germany