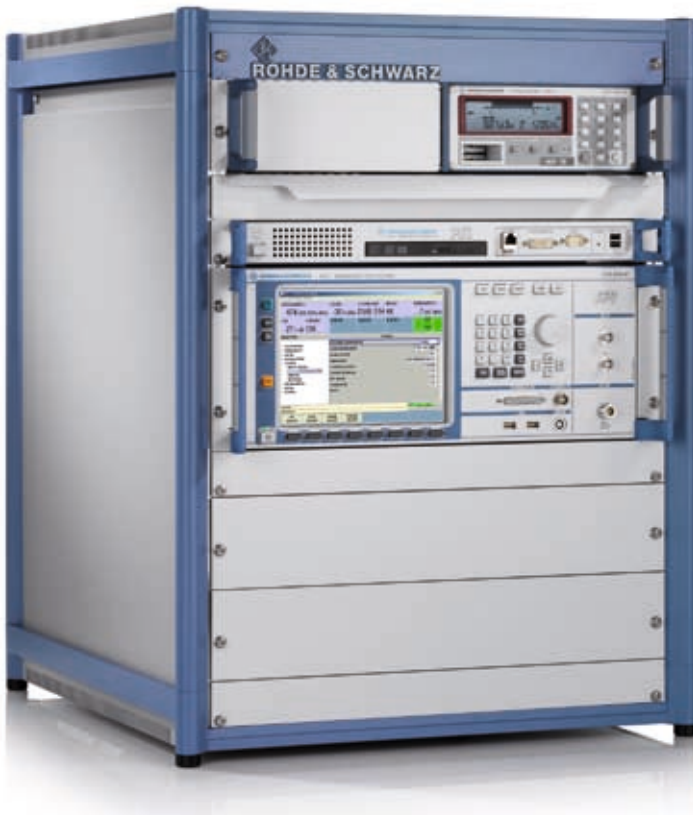


# R&S®TS-DVBH

## Test System

### The solution for GCF DVB-H conformance testing



**75** Years of  
Driving  
Innovation



**ROHDE & SCHWARZ**

# R&S® TS-DVBH Test System At a glance

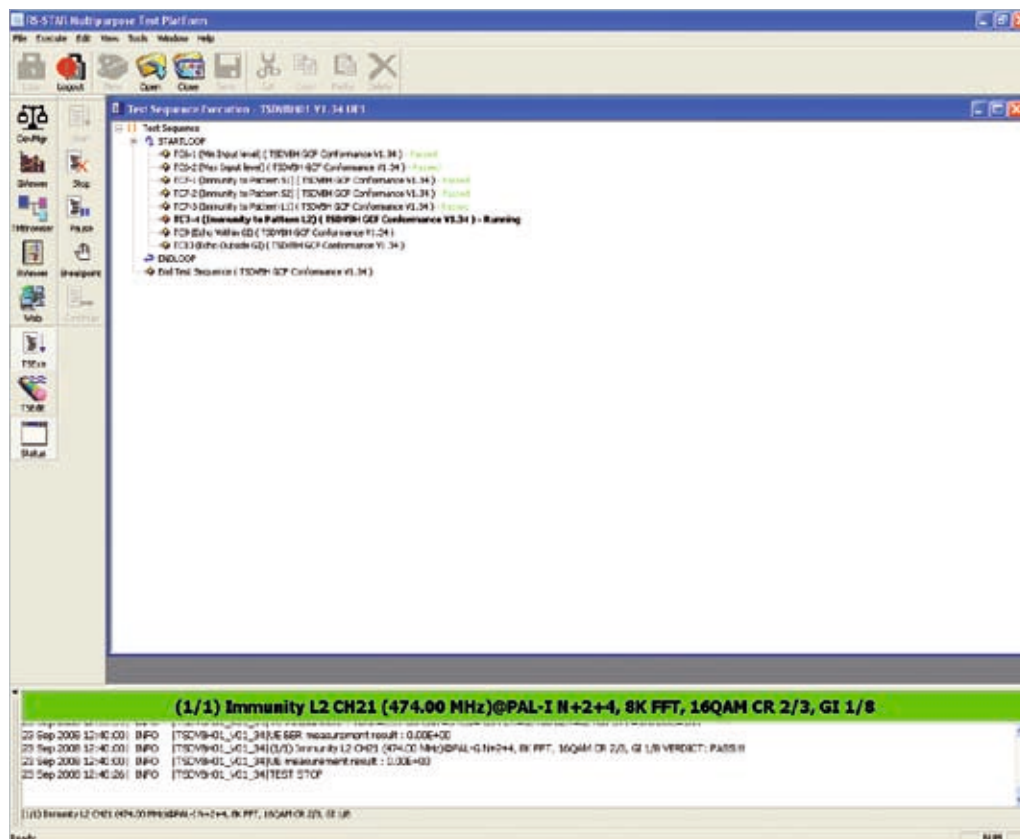
The R&S®TS-DVBH is a test system for verifying and certifying DVB-H user equipment. All GCF conformance tests in accordance with IEC 62002, part 2, first edition, can be performed. These test cases have also been prioritized by the GCF in Work Item WI-55 for conformance testing of user equipment.

The R&S®TS-DVBH is based on the tried-and-tested R&S®SFU broadcast test system, which is controlled by the R&S®PSL1 industrial controller. The DVB-H software that is optimized for performing EICTA MBRAI tests on mobile user equipment runs on this R&S®PSL1 industrial controller. Using a convenient drag & drop interface, test parameters can be adapted to individual requirements.

Its versatility makes the R&S®TS-DVBH ideal for conformance testing and for the verification and error analysis of DVB-H user equipment.

- In full accordance with IEC 62002, part 2, first edition: Interface conformance testing 2005-10
- Automated testing
- Comprehensive and versatile test reports
- User-configurable test sequences
- Automated path calibration
- Configurable parameters for user-specific test requirements

Configurable test sequences using drag&drop.



# R&S®TS-DVBH Test System

## Benefits and key features

### Efficient testing

User-configurable test sequences can be performed on the R&S®TS-DVBH by remote control. The DVB-H tests on the R&S®TS-DVBH can be integrated in an automated test environment.

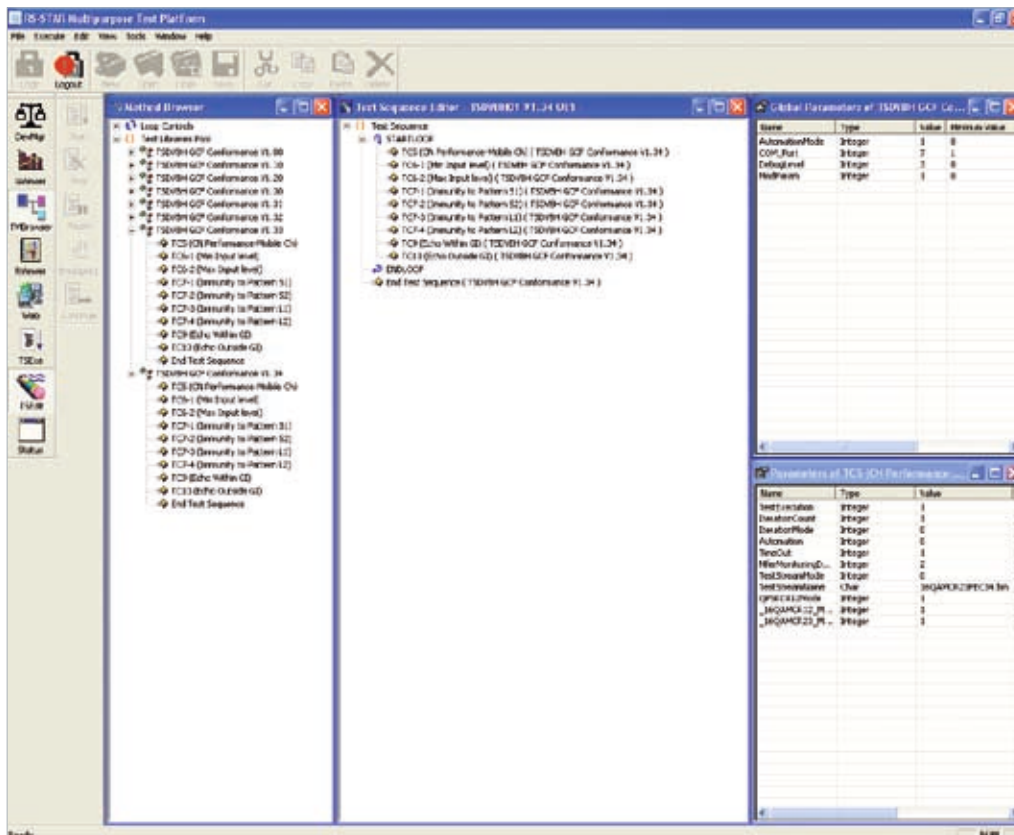
### Time savings due to flexible setting of parameters

The test parameters can be configured individually, which facilitates error analysis.

### High test accuracy

Since paths can be calibrated automatically, test tolerance can be minimized reliably.

Flexible parameterization of tests.



# Specifications in brief

General data		
Dimensions (W x H x D)		554.4 mm x 711.4 mm x 600 mm (21.83 in x 28.00 in x 23.62 in)
Weight		approx. 50 kg (110.23 lb)
Input voltage range, AC		100 V to 240 V
AC supply frequency		47 Hz to 63 Hz
Electrical safety		in line with IEC61010-1, EN61010-1 and UL61010B-1, CSAC22.2 No. 1010.1
Storage temperature range		0 °C to 40 °C
Operating temperature range		20 °C to 26 °C

Data sheets of the devices used in the system		
R&S®SFU	Broadcast Test System	PD 0758.1658.12 V06.00
R&S®PSL1	Industrial Controller	PD 0758.2219.12 V02.00
R&S®NRVS	Power Meter	PD 0756.3182.23
R&S®NRV-Z4	Power Sensor	PD 0758.2248.32

Test project report summary.

Test Project Report Summary		
Test Project:	TS050-01 V1.34 UET	
Project Start Time:	22.09.2008 16:24:16	
Project Summary		
PASS verdicts:	150	
FAIL verdicts:	1	
INCONCLUSIVE verdicts:	3	
Other results:	0	
Total number of test cases executed:	154	
Test Code	Verdict	Test Case Start Time
TC01.1 (Min. Input Level) V1.3.4	PASS	20.09.2008 16:24:16
TC02.2 (Max. Input Level) V1.3.4	PASS	20.09.2008 16:27:49
TC03.1 (Demod. to Pattern S1) V1.3.4	PASS	20.09.2008 16:29:44
TC04.2 (Demod. to Pattern S2) V1.3.4	PASS	20.09.2008 16:30:47
TC05.1 (Demod. to Pattern L1) V1.3.4	PASS	20.09.2008 16:38:26
TC06.4 (Demod. to Pattern L2) V1.3.4	PASS	20.09.2008 16:40:20
TC07.1 (Echoes within GB) V1.3.4	PASS	20.09.2008 16:45:44
TC08.1 (Echoes outside GB) V1.3.4	PASS	20.09.2008 16:45:52
TC09.1 (Min. Input Level) V1.3.4	PASS	20.09.2008 16:47:34
TC10.2 (Max. Input Level) V1.3.4	PASS	20.09.2008 16:50:42
TC11.1 (Demod. to Pattern S1) V1.3.4	PASS	20.09.2008 16:51:37
TC12.2 (Demod. to Pattern S2) V1.3.4	PASS	20.09.2008 16:52:56
TC13.1 (Demod. to Pattern L1) V1.3.4	PASS	20.09.2008 16:58:21
TC14.4 (Demod. to Pattern L2) V1.3.4	PASS	20.09.2008 17:02:13
TC15.1 (Echoes within GB) V1.3.4	PASS	20.09.2008 17:06:06
TC16.1 (Echoes outside GB) V1.3.4	PASS	20.09.2008 17:08:19
TC17.1 (Min. Input Level) V1.3.4	PASS	20.09.2008 17:40:02
TC18.2 (Max. Input Level) V1.3.4	PASS	20.09.2008 17:43:51
TC19.1 (Demod. to Pattern S1) V1.3.4	PASS	20.09.2008 17:45:26
TC20.2 (Demod. to Pattern S2) V1.3.4	PASS	20.09.2008 17:45:26
TC21.1 (Demod. to Pattern L1) V1.3.4	PASS	20.09.2008 17:45:26
TC22.4 (Demod. to Pattern L2) V1.3.4	PASS	20.09.2008 17:45:26
TC23.1 (Echoes within GB) V1.3.4	PASS	20.09.2008 17:45:26
TC24.1 (Echoes outside GB) V1.3.4	PASS	20.09.2008 17:45:26
TC25.1 (Min. Input Level) V1.3.4	PASS	20.09.2008 17:45:26
TC26.2 (Max. Input Level) V1.3.4	PASS	20.09.2008 17:45:26
TC27.1 (Demod. to Pattern S1) V1.3.4	PASS	20.09.2008 17:45:26
TC28.2 (Demod. to Pattern S2) V1.3.4	PASS	20.09.2008 17:45:26
TC29.1 (Demod. to Pattern L1) V1.3.4	PASS	20.09.2008 17:45:26
TC30.4 (Demod. to Pattern L2) V1.3.4	PASS	20.09.2008 17:45:26

# Ordering information

Designation	Type	Order No.
<b>Base unit (including accessories supplied such as power cable, manual, etc.)</b>		
R&S®TS-DVBH Rack, including DVB-H basic software, Windows operating system and cables	R&S®TS-DVBHRA	1510.4851.02
R&S®SFU Broadcast Test System with options	R&S®SFU	2210.2500K02
Industrial Controller, including keyboard and mouse	R&S®PSL1	1161.5000K14
LCD TFT Monitor 17", 1280 × 1024, DVI-D and analog input	R&S®PMC3	1082.6004.12
Power Meter (single-channel)	R&S®NRVS	1020.1809K02
Power Sensor 50 Ω, 100 kHz to 6 GHz, 1.3 m cable	R&S®NRV-Z4	0828.3616.02
<b>Software options</b>		
DVB-H GCF WI-55 Conformance Tests	R&S®TS-DVBH01	1117.7400.02

## Service you can rely on

- In 70 countries
- Person-to-person
- Customized and flexible
- Quality with a warranty
- No hidden terms

## About Rohde & Schwarz

Rohde & Schwarz is an independent group of companies specializing in electronics. It is a leading supplier of solutions in the fields of test and measurement, broadcasting, radiomonitoring and radiolocation, as well as secure communications. Established 75 years ago, Rohde & Schwarz has a global presence and a dedicated service network in over 70 countries. Company headquarters are in Munich, Germany.

## Regional contact

Europe, Africa, Middle East

+49 1805 12 42 42\* or +49 89 4129 137 74

customersupport@rohde-schwarz.com

North America

1-888-TEST-RSA (1-888-837-8772)

customer.support@rsa.rohde-schwarz.com

Latin America

+1-410-910-7988

customersupport.la@rohde-schwarz.com

Asia/Pacific

+65 65 13 04 88

customersupport.asia@rohde-schwarz.com

Certified Quality System  
**ISO 9001**  
DQS REG. NO 1954 QM

Certified Environmental System  
**ISO 14001**  
DQS REG. NO 1954 UM

More information at  
[www.rohde-schwarz.com](http://www.rohde-schwarz.com)

## Rohde & Schwarz GmbH & Co. KG

Mühldorfstraße 15 | 81671 München

Phone +49 89 41 290 | Fax +49 89 41 29 121 64

[www.rohde-schwarz.com](http://www.rohde-schwarz.com)

R&S® is a registered trademark of Rohde & Schwarz GmbH & Co. KG  
Trade names are trademarks of the owners | Printed in Germany (ed)  
PD 5213.9828.32 | Version 01.00 | October 2008 | R&S®TS-DVBH  
Data without tolerance limits is not binding | Subject to change

\*0.14 €/min within German wireline network; rates may vary in other networks (wireline and mobile) and countries.