

R&S®TSStream

Multi-TS Streaming Software

Streaming of MPEG transport streams over IP

R&S®TSStream is used to play multiple MPEG transport streams simultaneously over a single IP interface. All transport streams are output as a seamless loop. R&S®TSStream is ideal for feeding data into the R&S®CLG and R&S®SLG multichannel TV signal generators and for testing IPTV equipment.



R&S®TSStream

Multi-TS Streaming Software

At a glance

The R&S®TSStream multi-TS streaming software streams a number of MPEG transport stream files simultaneously over a single IP interface. The individual transport streams result in a high overall bit rate. To make the streams available on a standard PC, the R&S®TSStream software does not play the transport stream files directly from the hard disk but first loads them into the RAM. The maximum number and length of the transport streams depends solely on the PC's available RAM.

For uninterrupted operation, TV receivers require a continuous signal. This is why R&S®TSStream plays out all transport stream files at the MPEG level in a seamless loop. The PCR, PTS, DTS and continuity counter parameters are continuously restamped. When a transport stream file contains a seamless elementary stream, the receiver even delivers an interruption-free video and audio signal.

R&S®TSStream is especially suitable for feeding data into the R&S®CLG cable load generator and R&S®SLG satellite load generator. This makes it possible to reproducibly simulate real-world cable TV network configurations and satellite transponder assignments in the lab. R&S®TSStream can also be used as a signal source to test IPTV equipment.

R&S®TSStream features an intuitive graphical user interface. Status, memory occupancy and processor load are continuously displayed. Drag&drop operation makes it easier to work with a large number of transport streams. A special feature is the import function for configuration files from the R&S®CLG and R&S®SLG, which quickly and easily adopts these instruments' settings in R&S®TSStream.

Key facts

- Total streaming bit rate ≥ 5 Gbit/s
- More than 128 transport streams simultaneously
- All MPEG transport stream formats

Benefits and key features

Streaming of multiple MPEG transport streams over IP

- Feeding of data into the R&S®CLG and the R&S®SLG
- Simulation of real-world network configurations in the lab
- Testing and stress testing of IPTV equipment

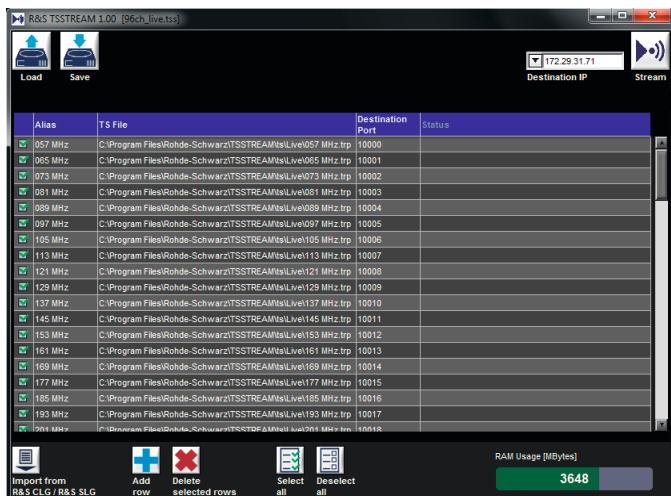
Seamless playout at the MPEG level

- Interruption-free receiver operation by restamping PCR, PTS, DTS and continuity counter in all transport streams
- Channel scan function test using transport streams with NIT
- Service-level receiver tests using transport streams with continuous elementary stream

Convenient operation thanks to straightforward graphical user interface

- Overview of current transport stream status, total streaming bit rate, memory occupancy and processor load
- Intuitive drag&drop operation
- Import of R&S®CLG/R&S®SLG configuration files

Configuration view.



Streaming view.



Specifications in brief

Specifications in brief		
Streaming parameters		
Output data rate	with Intel i7 3770 CPU	> 5.0 Gbit/s total data rate of all streams > 1.7 Gbit/s per stream
Total available memory for TS files		total available RAM minus 500 Mbyte system reserve
Size of input TS files and loop time of output streams	32 Gbyte RAM and 96 output streams, all with different content	max. 328 Mbyte per TS file, yields 52 s loop time at 50 Mbit/s
	32 Gbyte RAM and 96 output streams, all with identical content	max. 31.5 Gbyte per TS file, yields 84 min loop time at 50 Mbit/s
Streaming protocol		MPEG TS over UDP/IP
Seamless loop at MPEG-2 TS level	for unencrypted TS	restamping of PCR, PTS, DTS and continuity counter
	for encrypted TS	restamping of continuity counter
TS packet length	input	188 byte, 204 byte, 208 byte
	output	188 byte
System requirements		
Operating system		Windows 7, 64 bit
CPU		multicore recommended: Intel i7 3770 or later
RAM		min. 1 Gbyte recommended: ≥ 8 Gbyte
Hard disk		≥ 30 Mbyte free memory
Display resolution		min. 800 × 600 pixel SVGA, 256 colors
Ethernet interface		network adapter matching the streaming target device
User rights		administrator rights for installation
License management		
Software licensing		machine binding, portable to other PCs
30-day demo license		available on request

Ordering information

Designation	Type	Order No.
Multi-TS Streaming Software	R&S®TSSstream	2116.8945.02
Recommended as accessory for the following Rohde & Schwarz instruments		
Cable Load Generator	R&S®CLG	2116.9170.02
Satellite Load Generator	R&S®SLG	2116.9193.02

Service that adds value

- | Worldwide
- | Local and personalized
- | Customized and flexible
- | Uncompromising quality
- | Long-term dependability

About Rohde & Schwarz

Rohde & Schwarz is an independent group of companies specializing in electronics. It is a leading supplier of solutions in the fields of test and measurement, broadcasting, radiomonitoring and radiolocation, as well as secure communications. Established more than 80 years ago, Rohde & Schwarz has a global presence and a dedicated service network in over 70 countries. Company headquarters are in Munich, Germany.

Quality management and environmental management

Rohde & Schwarz is certified in line with the ISO 9001 and ISO 14001 management systems.

Certified Quality System
ISO 9001

Certified Quality System
ISO 14001

Rohde & Schwarz GmbH & Co. KG

www.rohde-schwarz.com

Regional contact

- | Europe, Africa, Middle East | +49 89 4129 12345
customersupport@rohde-schwarz.com
- | North America | 1 888 TEST RSA (1 888 837 87 72)
customer.support@rsa.rohde-schwarz.com
- | Latin America | +1 410 910 79 88
customersupport.la@rohde-schwarz.com
- | Asia/Pacific | +65 65 13 04 88
customersupport.asia@rohde-schwarz.com
- | China | +86 800 810 8228/+86 400 650 5896
customersupport.china@rohde-schwarz.com

R&S® is a registered trademark of Rohde & Schwarz GmbH & Co. KG

Trade names are trademarks of the owners |

PD 3606.9562.32 | Version 01.01 | January 2014 (fi)

R&S®TSSStream Multi-TS Streaming Software

Data without tolerance limits is not binding | Subject to change

© 2013 - 2014 Rohde & Schwarz GmbH & Co. KG | 81671 München, Germany



3606956232