

R&S®TSM A6

Autonomous Mobile Network Scanner Supplement Driver Update



4900904702

Contents

1	Version History.....	2
2	Instruction R&S TSPC-U2L2 Installer v1.03.00.00.....	2
3	Instruction R&S TSPC-U2L Installer v1.04.00.00.....	6
4	Instruction Samsung USB Driver Installer v01.05.61.00.....	10

1 Version History

Version	Update
01	Instruction Dual Gbit LAN port adapter TSPC-U2L2 Installer v1.03.00.00
02	Instruction Single Gbit LAN port adapter TSPC-U2L Installer v1.04.00.00 Instruction Samsung USB driver Installer v01.05.61.00

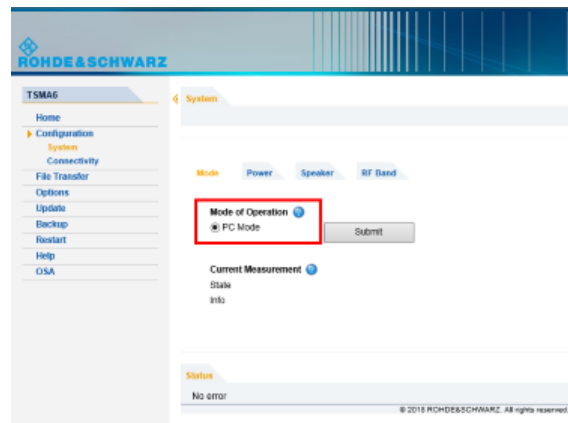
2 Instruction R&S TSPC-U2L2 Installer v1.03.00.00

The package `TSMA6_DriverUpdate_W10_64_xx.exe` is required to extend the R&S TSMA6 with the USB-C to dual Gbit LAN adapter R&S TSPC-U2L2.

The tool installs the device driver and configures both added Gbit LAN adapters to obtain the IP address automatically.

Perform the following steps.

1. Connect an external monitor, mouse and keyboard to the R&S TSMA6.
2. In the Web-GUI, set the "Mode of Operation" to "PC Mode".

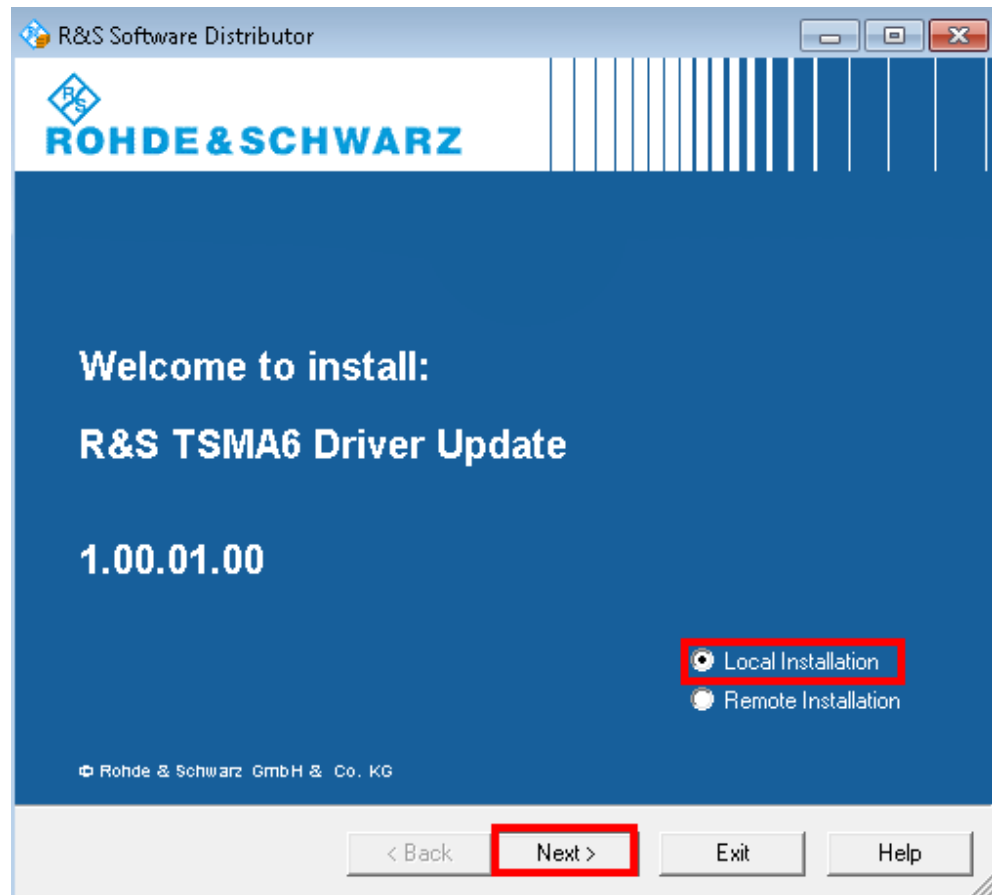


3. Attach the R&S TSPC-U2L2 to the TSM6 USB-C connector.

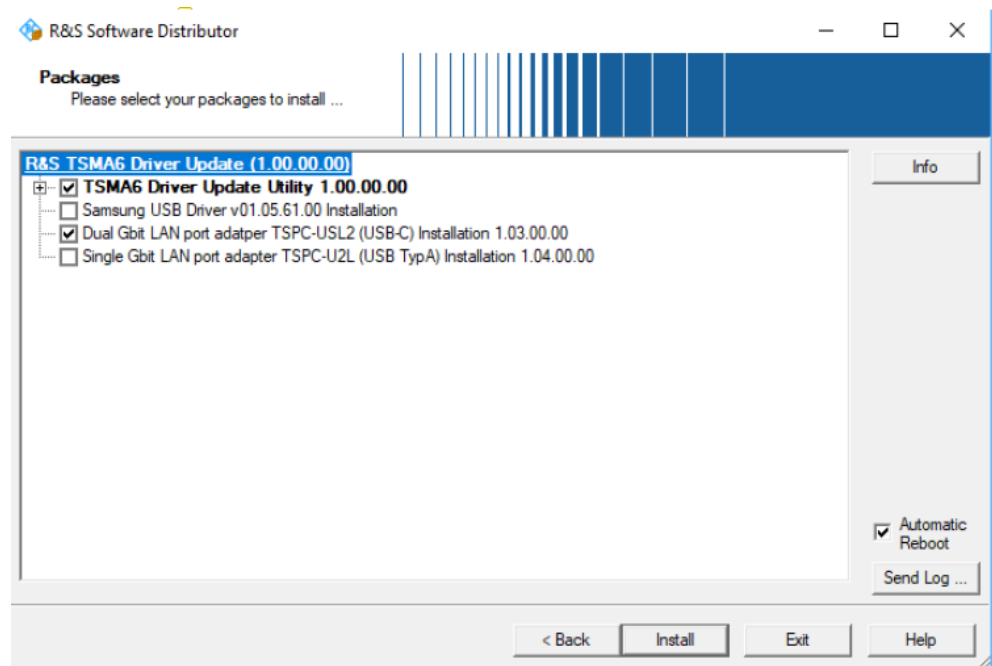


Figure 2-1: USB-C connector

4. Download the setup file into a local directory on the R&S TSM6.
5. Run the setup file.
Alternatively, you can copy the setup file to a USB stick and start the setup from there.
6. Select "Local Installation" and press "Next".

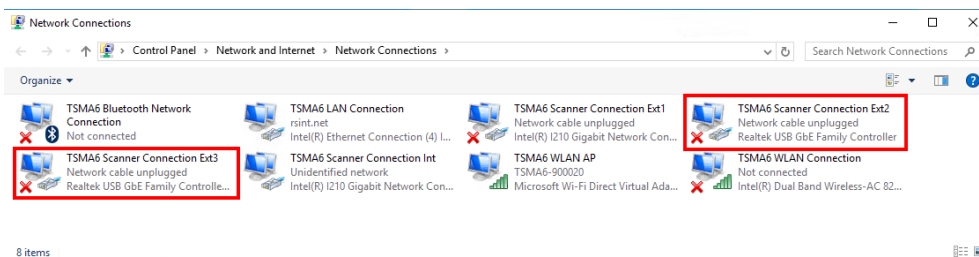


7. Select the component "Dual Gbit LAN port adapter TSPC-US2L (USB-C) Installation 1.03.00.00" and press "Install".

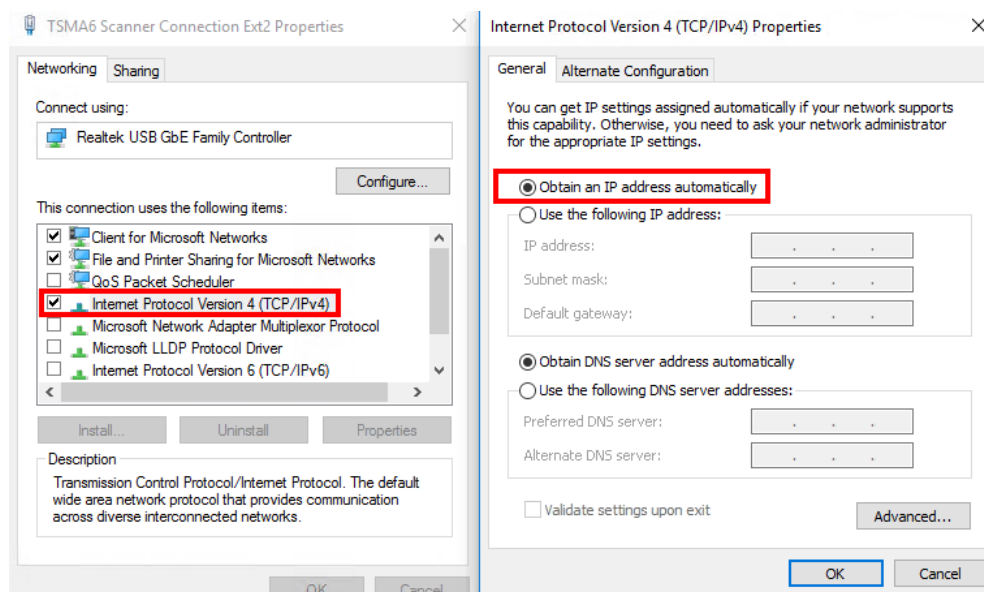


The R&S T SMA6 executes a reboot.

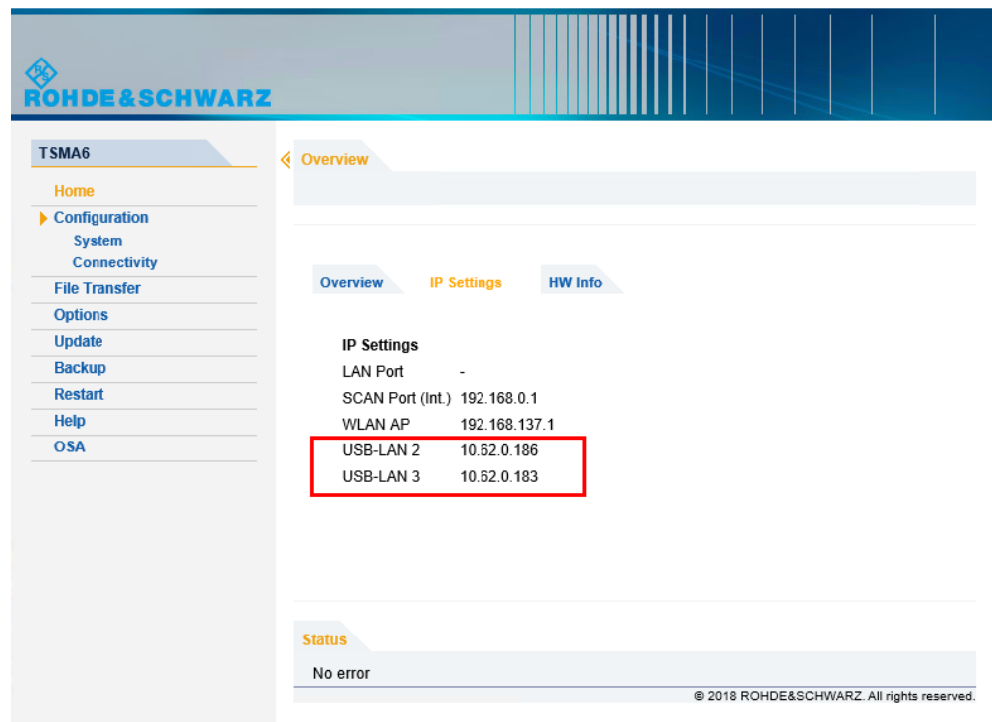
8. The installation is finished when the R&S T SMA6 desktop screen finally comes up.
9. Navigate to "Control Panel" > "Network and Internet" > "Network Connections" and check the availability of the following network adapters.
 - T SMA6 Scanner Connection Ext2
 - T SMA6 Scanner Connection Ext3



In the IP properties, the setting "Obtain an IP address automatically" must be selected.



10. The IP addresses for USB-LAN 2 and USB- LAN 3 are displayed in the Web-GUI.



The screenshot displays the R&S TSMA6 web interface. On the left is a navigation menu with options: Home, Configuration (System, Connectivity), File Transfer, Options, Update, Backup, Restart, Help, and OSA. The main content area is titled 'Overview' and contains three tabs: Overview, IP Settings, and HW Info. The 'IP Settings' tab is active, showing a table of network configurations. The 'USB-LAN 2' and 'USB-LAN 3' rows are highlighted with a red box. Below the table is a 'Status' section showing 'No error'. A copyright notice '© 2018 ROHDE&SCHWARZ. All rights reserved.' is visible at the bottom right.

IP Settings	
LAN Port	-
SCAN Port (Int.)	192.168.0.1
WLAN AP	192.168.137.1
USB-LAN 2	10.52.0.186
USB-LAN 3	10.52.0.183

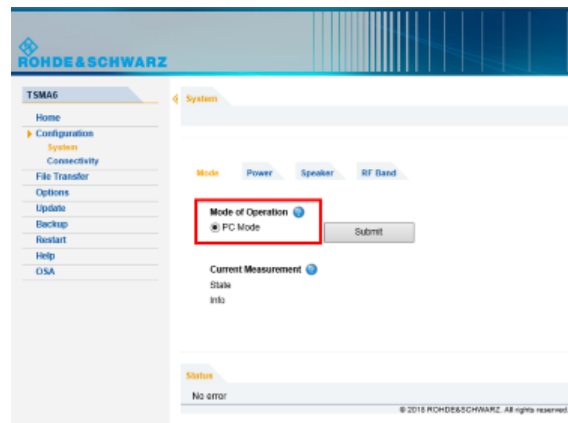
3 Instruction R&S TSPC-U2L Installer v1.04.00.00

The package `TSMA6_DriverUpdate_W10_64_xx.exe` is required to extend the R&S TSMA6 with the USB-A to Gbit LAN adapter R&S TSPC-U2L.

The tool installs the device driver and configures the added Gbit LAN adapter to obtain the IP address automatically.

Perform the following steps.

1. Connect an external monitor, mouse and keyboard to the R&S TSMA6.
2. In the Web-GUI, set the "Mode of Operation" to "PC Mode".



3. Attach the R&S TSPC-U2L to one of the TSMa6 USB-3.0 connectors.

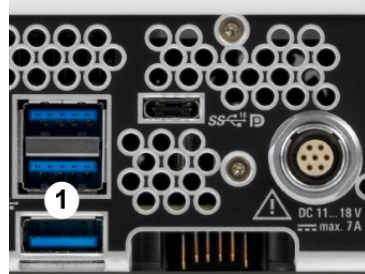
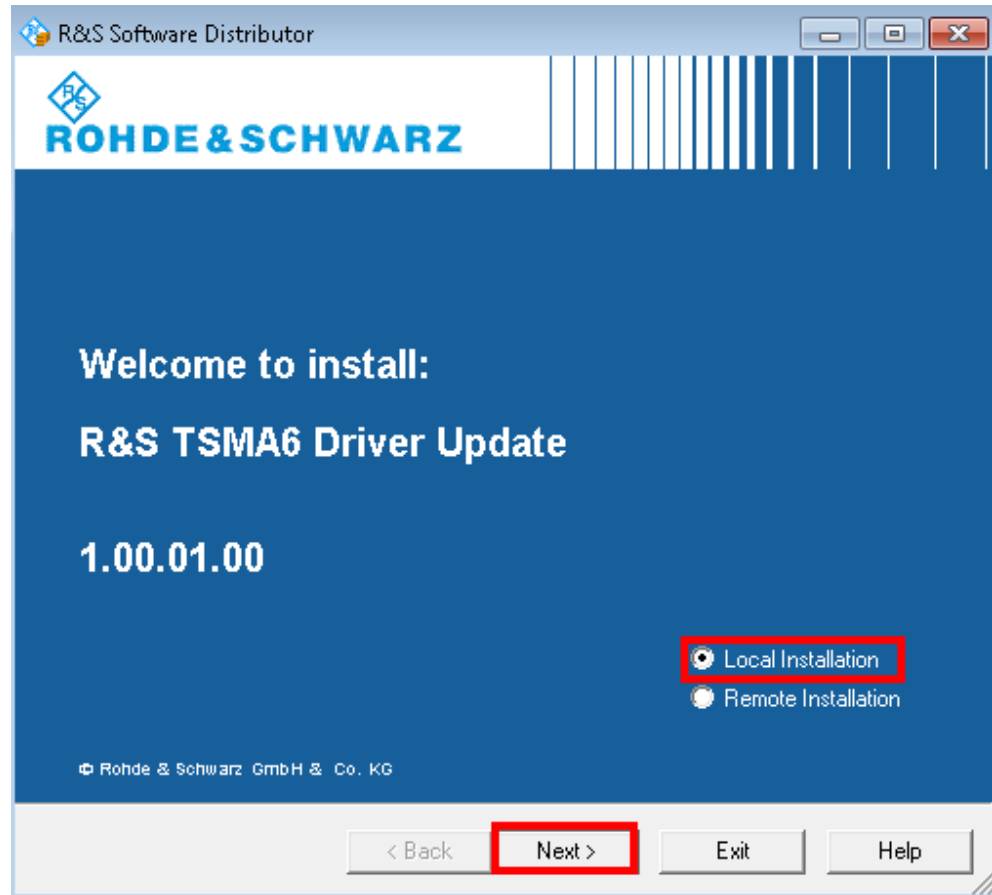
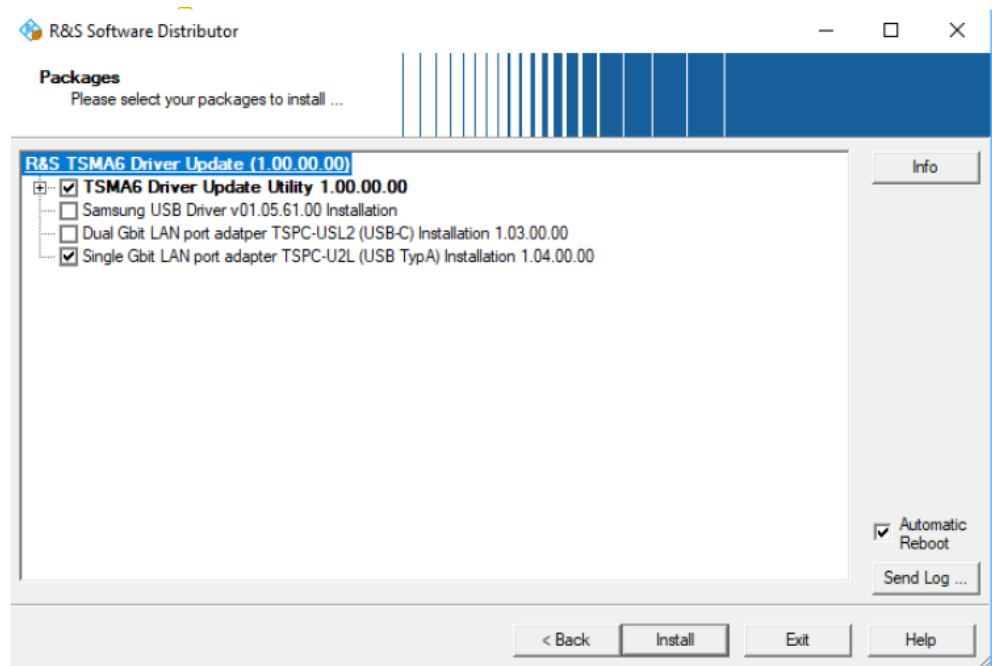


Figure 3-1: USB-3.0 connectors

4. Download the setup file into a local directory on the R&S TSMa6.
5. Run the setup file.
Alternatively, you can copy the setup file to a USB stick and start the setup from there.
6. Select "Local Installation" and press "Next".

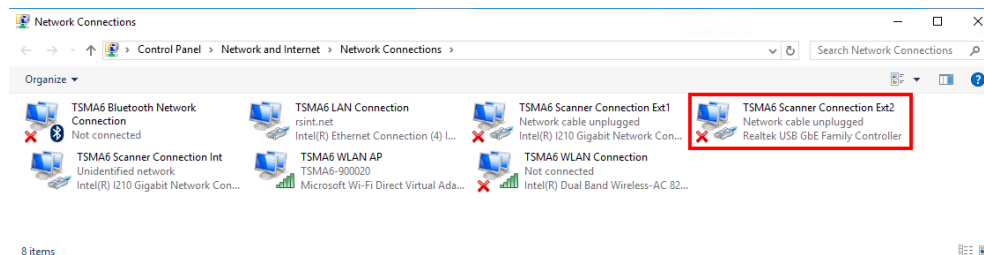


7. Select the component "Single Gbit LAN port adapter TSPC-U2L (USB TypA) Installation 1.04.00.00" and press "Install".

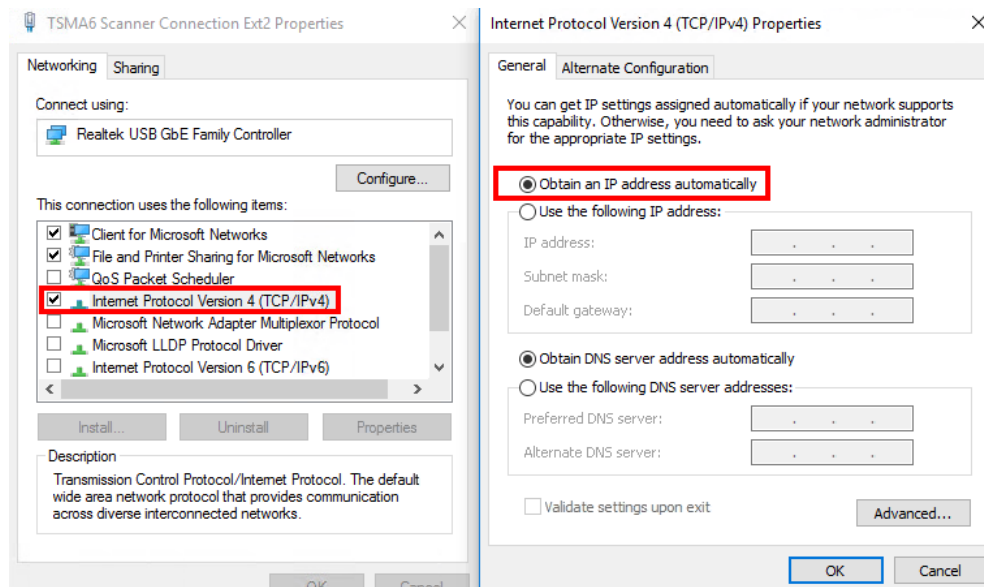


The R&S TSMA6 executes a reboot.

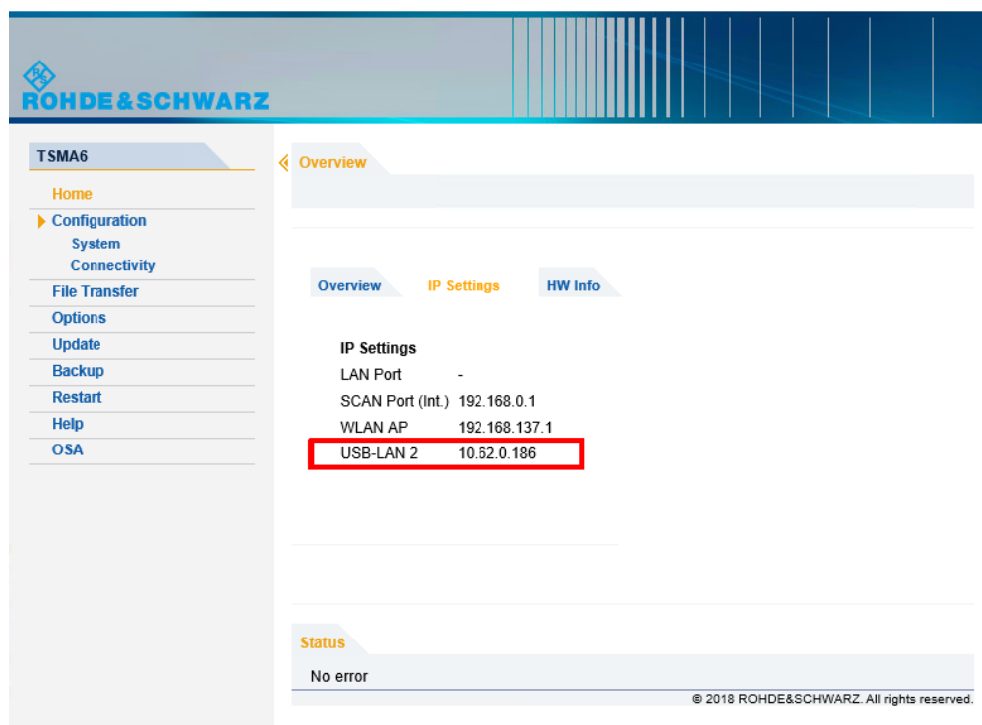
8. The installation is finished when the R&S TSMA6 desktop screen finally comes up.
9. Navigate to "Control Panel" > "Network and Internet" > "Network Connections" and check the availability of the following network adapter.
 - TSMA6 Scanner Connection Ext2



In the IP properties, the setting "Obtain an IP address automatically" must be selected.



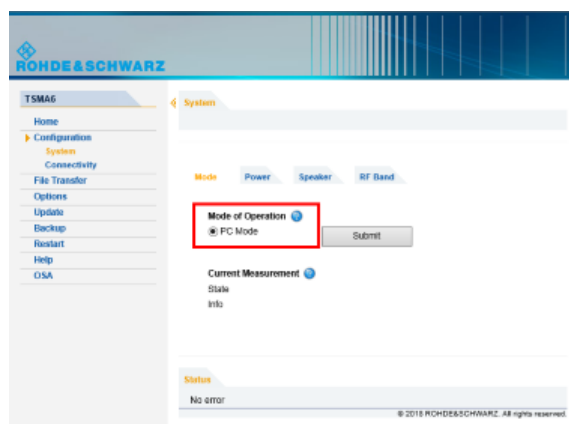
10. The IP address for USB-LAN 2 is displayed in the Web-GUI.



4 Instruction Samsung USB Driver Installer v01.05.61.00

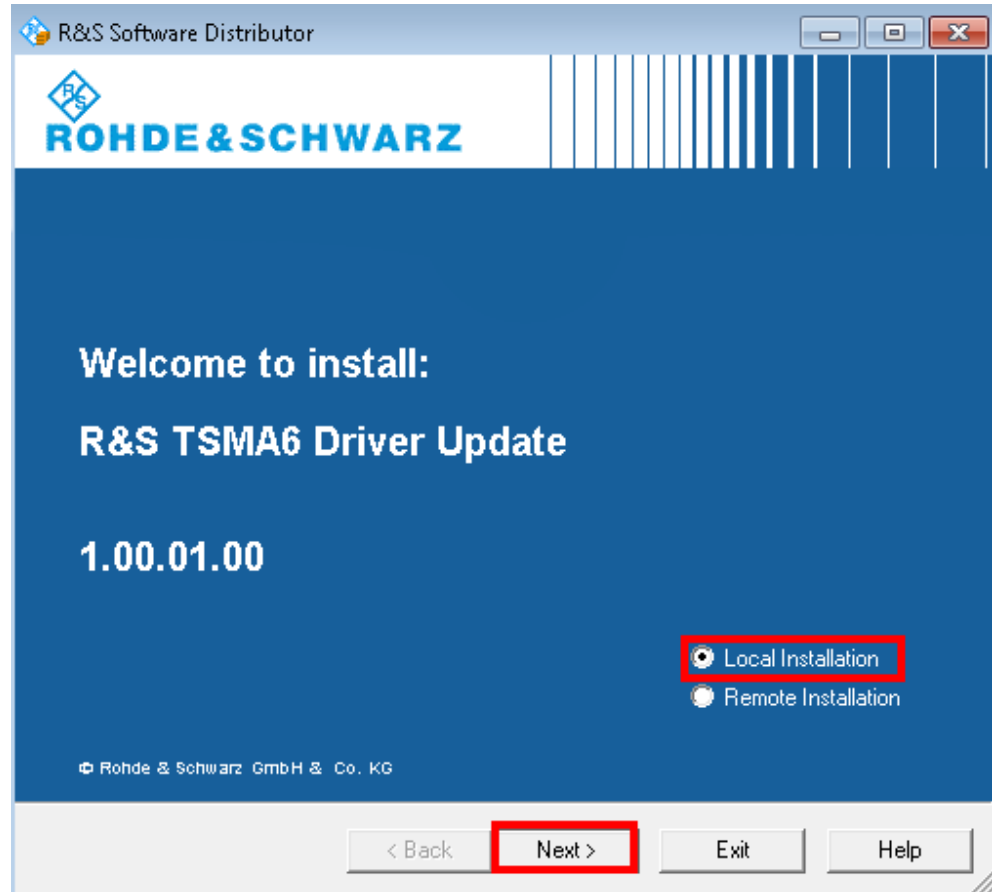
The package `TSM6_DriverUpdate_W10_64_xx.exe` is required to extend the R&S TSM6 ROMES measurements with Samsung mobile devices.

1. Connect an external monitor, mouse and keyboard to the R&S TSM6.
2. In the Web-GUI, set the "Mode of Operation" to "PC Mode".

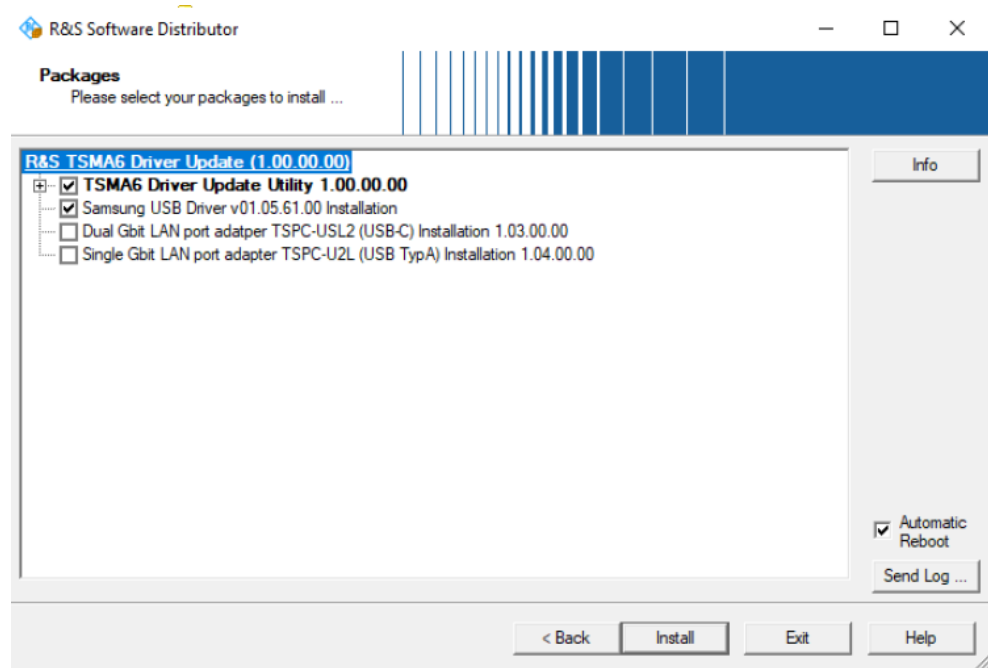


3. Download the setup file into a local directory on the R&S TSM6.

4. Run the setup file.
Alternatively, you can copy the setup file to a USB stick and start the setup from there.
5. Select "Local Installation" and press "Next".



6. Select the component "Samsung USB Driver v01.05.61.00 Installation" and press "Install".



The R&S TSM A6 executes several reboot cycles.

7. The installation is finished when the R&S TSM A6 desktop screen finally comes up.
8. Connect and configure the Samsung mobile device and configure the R&S ROMES according to the "How to - Samsung Galaxy S8 idle measurement" (3-11 How to perform Samsung Galaxy S8 idle measurement.pdf), which is part of the R&S ROMES DVD.