

# R&S®NRP-Z27/-Z37

## Release Notes

### Firmware Version 04.27

© 2019 Rohde & Schwarz GmbH & Co. KG  
Muehldorfstr. 15, 81671 Munich, Germany  
Phone: +49 89 41 29 - 0  
Fax: +49 89 41 29 12 - 164  
E-mail: <mailto:info@rohde-schwarz.com>  
Internet: <http://www.rohde-schwarz.com>

Subject to change

R&S® is a registered trademark of Rohde & Schwarz GmbH & Co. KG. Trade names are trademarks of the owners.

1169.4725.00 | Version 04.27 | R&S®NRP-Z27/-Z37

The software makes use of several valuable open source software packages. For information, see the "Open Source Acknowledgment" provided with the product.

The following abbreviations are used throughout this document: R&S®NRP-Z27/-Z37 is abbreviated as R&S NRP-Z27/-Z37.

PAD-T-M: 3574-3288-02/03.00/C/1/1/EN

# Contents

<b>1</b>	<b>Information on the Current Version and History.....</b>	<b>3</b>
1.1	Version 04.27.....	3
1.2	Version 04.18a.....	3
1.3	Version 04.18 (since 04.08).....	4
<b>2</b>	<b>Firmware Update.....</b>	<b>5</b>
2.1	Important Notes.....	5
2.2	Installation Software.....	5
2.3	Hardware and Software Requirements.....	5
2.4	Updating the Application Firmware.....	5
<b>3</b>	<b>Customer Support.....</b>	<b>9</b>

# 1 Information on the Current Version and History

## 1.1 Version 04.27

### New Functionality

#### Functions

New commands: CALibration:TEST:DEVIation? and CALibration:TEST:REFErence? implemented

### Modified Functionality

#### Functions

n.a.

### Improvements

#### Improvements

Fixed feature recognition for R&S NRP2 and R&S NRX (SENSe:SGAMma-Commands)

Default zero values that are measured during calibration are now automatically taken into account

No Sensor Reset during Zero Calibration (which caused the "Missing Sensor" at the NRP)

TEST:SENSor? – now the heater self test is evaluated with PASS/FAIL

CALibration:DATA – the new calibration data (including S-Parameters) is active after transmission to sensor. No sensor Reset is necessary

### Known Issues

#### Known-Issues

n.a.

## 1.2 Version 04.18a

### New Functionality

#### Functions

n.a.

### Modified Functionality

#### Functions

n.a.

**Improvements****Improvements**

The firmware update file "NRPZ27\_SensorFW\_BL\_04\_18a.nrp" contains now the Bootloader Version 01.84

Bootloader 01.84 fixes the sensor detection problem when attaching a sensor to the R&S CMW

**Known Issues****Known-Issues**

n.a.

**1.3 Version 04.18 (since 04.08)****New Functionality****Functions**

New parameter Trigger Dropout Time for a stable internal triggering

TRIGger:DTIME

**Modified Functionality****Functions**

n.a.

**Improvements****Improvements**

Interpolation of calibration factors fixed

When setting a frequency out of range of the sensor specification with SENSE:FREQuency the sensor selects the lower or upper limit of the sensor specification instead of ignoring the setting

Correct calculation of the result with measurements in buffered mode when SENSE:AVERAge:STATE OFF

Default Setting of SENSE:AVERAge:COUNt:AUTO:RESolution is changed to 3

The Auto Averaging using the NORMAL Algorithm is calculating the correct Filterlength

Sensors fully supported with the SMA/SMF-K28

**Known Issues****Known-Issues**

n.a.

## 2 Firmware Update

### 2.1 Important Notes

This package contains the firmware for the power sensor R&S® NRP-Z27/-Z37. Each firmware update consists of one file: application firmware and boot loader are merged together. This file should be downloaded into the sensors to get the latest functionality. The firmware release 04.27 is suitable for all power sensors R&S® NRP-Z27/-Z37 already delivered. The firmware for the R&S®NRP base unit as well as the firmware for other R&S®NRP power sensors is available as a separate package.

### 2.2 Installation Software

Use the Firmware Update program tool from the R&S®NRP toolkit to load the new firmware for the power sensor R&S® NRP-Z27/-Z37. The toolkit is supplied on a CD-ROM together with the sensors. It is also available on the internet under <https://www.rohde-schwarz.com/software/nrp-toolkit/>.

### 2.3 Hardware and Software Requirements

The system requirements to perform a firmware update are as follows:

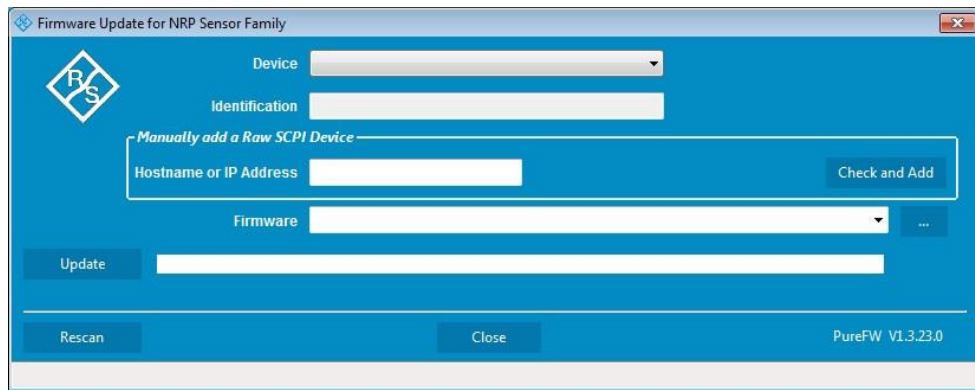
- PC with USB and either NRP-Z3, NRP-Z4 or NRP-Z5
- Operating system Windows™ 7 or Windows™ 8 or Windows™ 10
- The R&S NRP-Toolkit software must be installed on your PC. The Firmware Update is part of the NRP-Toolkit.
- A Rohde & Schwarz update file (\*.nrp) for the sensor must be available.

The update files are available in <https://www.rohde-schwarz.com/firmware/nrpz27/>

### 2.4 Updating the Application Firmware

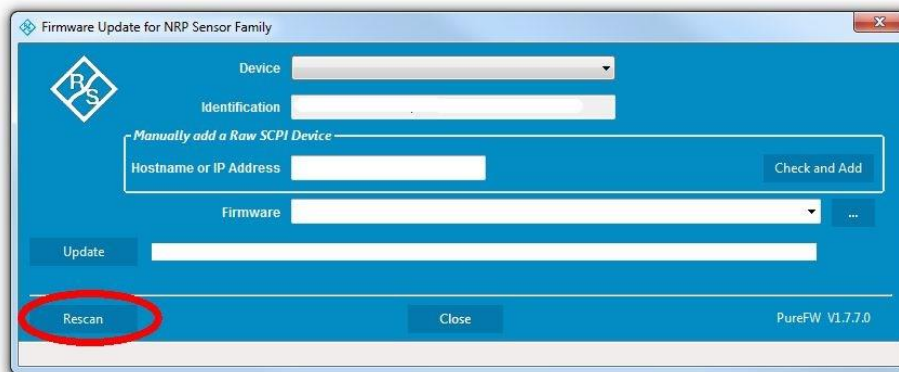
**To perform a firmware update:**

Start the Firmware Update program via "Start menu > NRP-Toolkit > Firmware Update". The following window should appear:

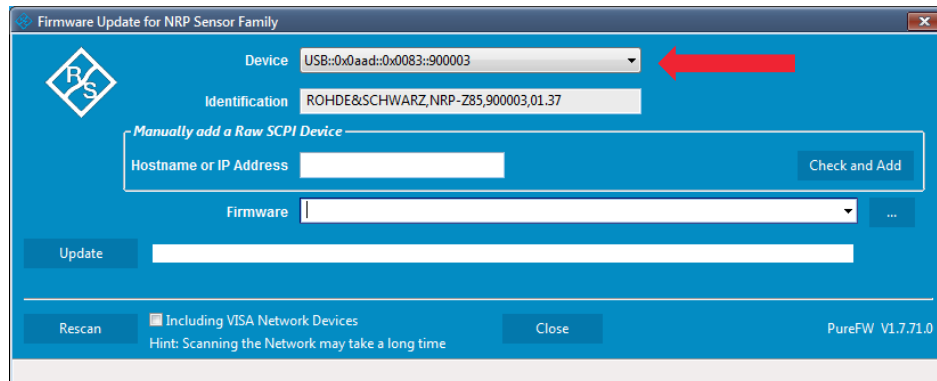


The program automatically starts scanning for R&S NRP-Zxx power sensors. When the scan is completed, all recognized power sensors are listed in the "Device" dropdown control.

If the sensor you want to update is not listed in the "Device" dropdown control, press "Rescan" to search for attached sensors.

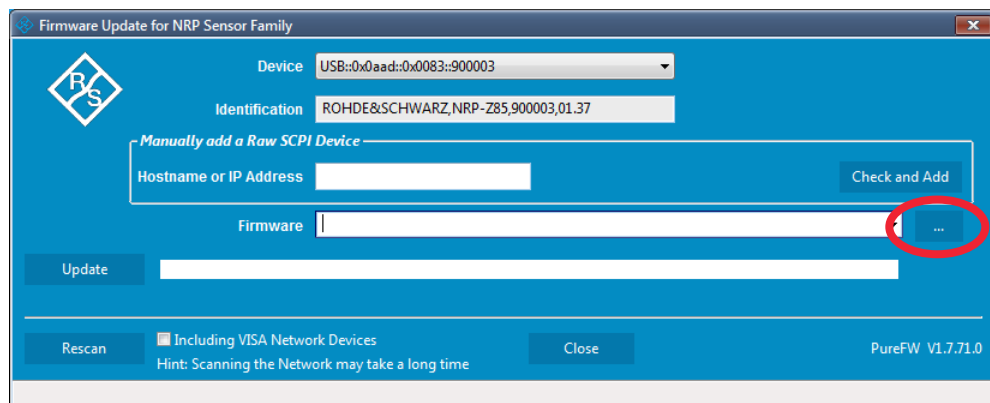


In the "Device" line select the sensor you want to update.

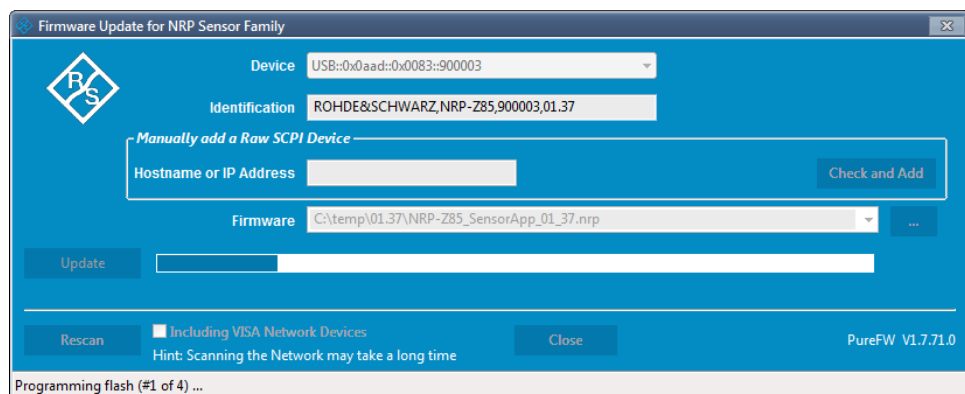


The "Hostname or IP Address" field is not used during this procedure and should therefore be left empty.

In the "Firmware" field enter the full path and file name of the update file or press the ellipsis button to browse the file system for it. New firmware for the R&S NRP-Zxx power sensors generally has an \*.nrp extension.

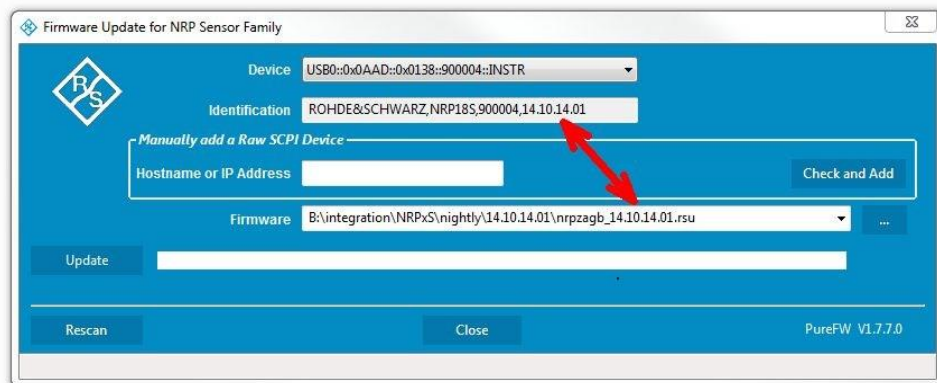


Click on the "Update" button to download the new firmware and program it into the flash memory of the sensor.



During the update process the progress is shown through a progress bar. The update sequence may take a couple of minutes, depending on the sensor model and the size of the selected file.

Check if the update was successful. This is the case if the firmware version in the "Identification" field is the same as the one you loaded in the "Firmware" field.



### Potential damage to the firmware of the device

Disconnecting the power supply while an update is in progress may lead to missing or faulty firmware.

Special care must be taken on not disconnecting the power supply while the update is in progress. Interrupting the power supply during the firmware update will most likely lead to an unusable device which needs to be sent in for maintenance.



## 3 Customer Support

### Technical support – where and when you need it

For quick, expert help with any Rohde & Schwarz equipment, contact one of our Customer Support Centers. A team of highly qualified engineers provides telephone support and will work with you to find a solution to your query on any aspect of the operation, programming or applications of Rohde & Schwarz equipment.

### Up-to-date information and upgrades

To keep your instrument up-to-date and to be informed about new application notes related to your instrument, please send an e-mail to the Customer Support Center stating your instrument and your wish. We will take care that you will get the right information.

#### Europe, Africa, Middle East

Phone +49 89 4129 12345

[customersupport@rohde-schwarz.com](mailto:customersupport@rohde-schwarz.com)

#### North America

Phone 1-888-TEST-RSA (1-888-837-8772)

[customer.support@rsa.rohde-schwarz.com](mailto:customer.support@rsa.rohde-schwarz.com)

#### Latin America

Phone +1-410-910-7988

[customersupport.la@rohde-schwarz.com](mailto:customersupport.la@rohde-schwarz.com)

#### Asia/Pacific

Phone +65 65 13 04 88

[customersupport.asia@rohde-schwarz.com](mailto:customersupport.asia@rohde-schwarz.com)

#### China

Phone +86-800-810-8828 / +86-400-650-5896

[customersupport.china@rohde-schwarz.com](mailto:customersupport.china@rohde-schwarz.com)