

# SOVERON AR

## Extras for R&S®AR5000 airborne radios

### Mounting trays and mating connector sets

The mounting trays for R&S®AR5000 airborne radios optimize the mechanical integration of radios in aircraft and make it easy to install and remove the radios. The mounting trays are available in two versions: the R&S®KR5000AR mounting tray (standard) and the R&S®KR5000AC cooling tray. The cooling tray improves radio heat dissipation, which is important for higher operating temperatures and longer transmit cycles.

Rohde & Schwarz offers the R&S®ZR5100AR mating connector set to connect radios to the aircraft cable harnesses.



R&S®KR5000AR mounting tray and R&S®KR5000AC cooling tray.

### R&S®ZK5100AR maintenance connection box

The R&S®ZK5100AR maintenance connection box enables R&S®AR5000 radios to be operated outside the aircraft for testing and maintenance. The maintenance connection box provides access to the radio functions via standard interfaces. This makes radio configuration easy and flexible and no special mating connectors and additional cabling are required. Basic functions such as switching the radio on/off, assigning radio addresses as well as PTT/tone transmit are integrated in the R&S®ZK5100AR.



R&S®ZK5100AR maintenance connection box, front and rear view.

Product Flyer | Version 02.00

**ROHDE & SCHWARZ**

Make ideas real

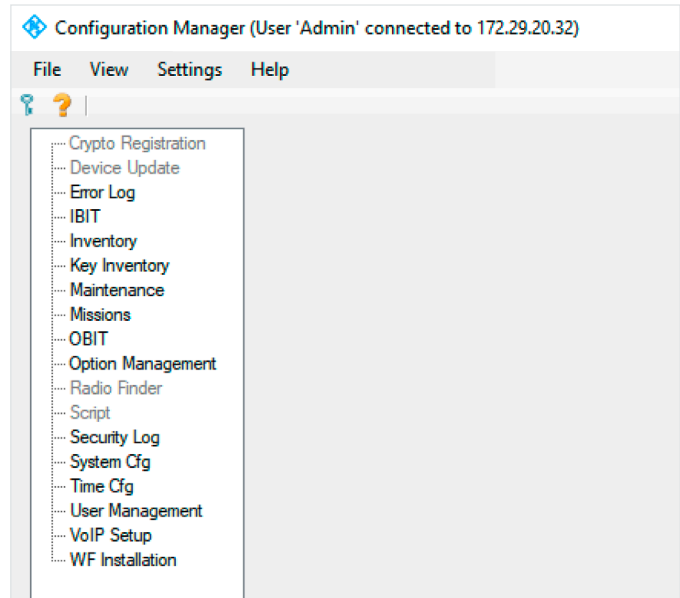


## R&S® Configuration Manager

R&S® Configuration Manager is a tool for configuring, servicing and maintaining several components and functions within the SOVERON family. R&S® Configuration Manager was developed for the following configurable system devices (CSD): SOVERON RADIOS and SOVERON LAB.

It handles the following:

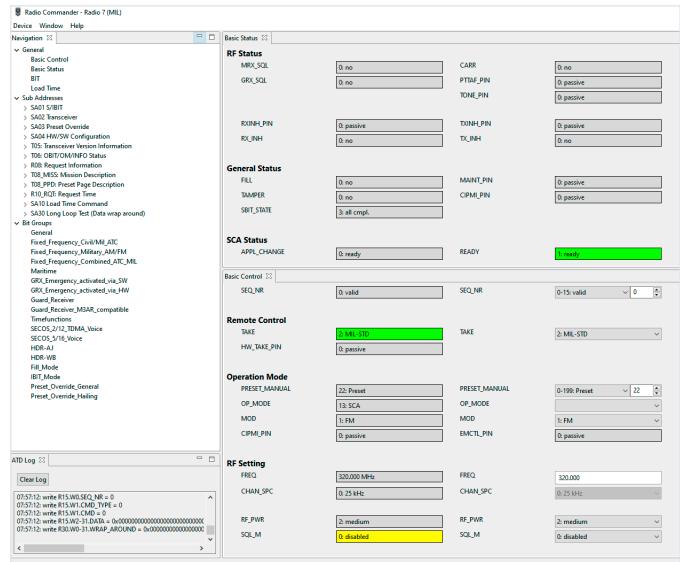
- ▶ The software and mission configuration load of the SOVERON family for tactical, airborne, naval and stationary use
- ▶ The preparation and adaptation of every SOVERON transceiver within a communications scenario to the installation platform (vehicle type) with IP based control clients, audio settings and antenna configuration, including service and maintenance
- ▶ Configuration, service and maintenance tasks of crypto processors (CP) in the SOVERON CRYPTO security management system
- ▶ Configuration, service and maintenance tasks for the evaluation hardware consisting of the SOVERON based digital unit and transceiver unit of the waveform development environment (SOVERON LAB), enabling the development of specific SCA waveforms on the custom development platform



Start window of the R&S® Configuration Manager.

## R&S® CP5000AR radio commander

R&S® CP5000AR radio commander is PC software that integrates airborne transceivers into the aircraft. This program can be used to control the radio via the MIL-STD-1553B data bus or the RS-485 interface. A suitable AIM ANET1553-1-type MIL-STD-1553/Ethernet interface box is required to control the MIL-STD-1553B data bus interface. Rohde & Schwarz can recommend a specific model upon request.



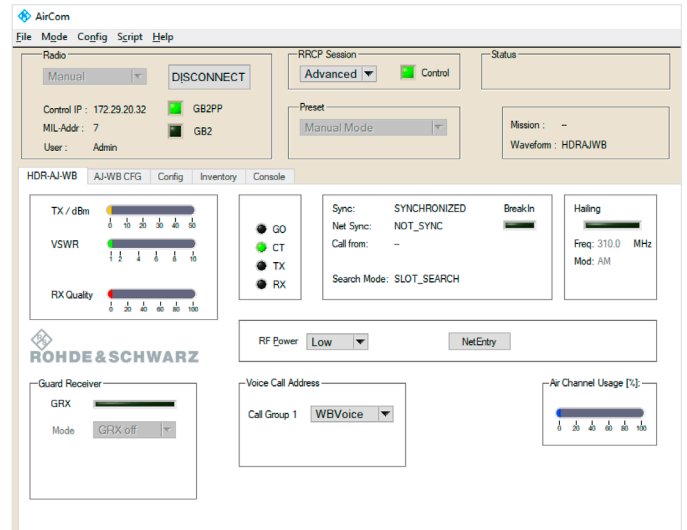
Main window of the R&S® CP5000AR radio commander.

## R&S®NS5020AR AirCom

The R&S®NS5020AR AirCom tool is a graphical user interface for controlling and monitoring R&S®AR5000 airborne radios. R&S®NS5020AR uses the MIL-STD-1553 or GB2PP interfaces to control the radio. The RRCP (GB2PP Ethernet interface) allows advanced control and monitoring of the following waveform parameters and maintenance functions:

- ▶ GUI based control of platform and waveform parameters
- ▶ Monitoring of platform and waveform radio remote control protocol (RRCP) parameters
- ▶ Logging MIL-STD-1553, GB2PP and RRCP platform and waveform parameters
- ▶ Radio configuration/maintenance
- ▶ Loadable set installation
- ▶ Mission installation

Each radio requires a separate instance of R&S®NS5020AR. The tool does not directly access the MIL-STD-1553 interface of the radio. It connects to the MIL-STD-1553 radio interface in combination with an AIM ANET1553-1-type MIL-STD-1553/Ethernet interface box.



R&S®NS5020AR AirCom start window.

## ORDERING INFORMATION

Designation	Type	Order No.
Mounting tray for R&S®AR5000	R&S®KR5000AR	Contact your local Rohde & Schwarz sales office.
Cooling tray for R&S®AR5000, ARINC 600, 3 MCU	R&S®KR5000AC	
Mating connector set for R&S®AR5000, ARINC 600	R&S®ZR5100AR	
Maintenance connection box for R&S®AR5000	R&S®ZK5100AR	
Configuration manager	R&S®Configuration Manager	
Radio commander, software, MIL-STD-1553B and RS-485	R&S®CP5000AR	
AirCom	R&S®NS5020AR	

## Service at Rohde & Schwarz You're in great hands

- ▶ Worldwide
- ▶ Local and personalized
- ▶ Customized and flexible
- ▶ Uncompromising quality
- ▶ Long-term dependability

## Rohde & Schwarz

The Rohde&Schwarz technology group is among the trail-blazers when it comes to paving the way for a safer and connected world with its leading solutions in test & measurement, technology systems and networks&cybersecurity. Founded more than 85 years ago, the group is a reliable partner for industry and government customers around the globe. The independent company is headquartered in Munich, Germany and has an extensive sales and service network with locations in more than 70 countries. [www.rohde-schwarz.com](http://www.rohde-schwarz.com)

## Sustainable product design

- ▶ Environmental compatibility and eco-footprint
- ▶ Energy efficiency and low emissions
- ▶ Longevity and optimized total cost of ownership

Certified Quality Management  
**ISO 9001**

Certified Environmental Management  
**ISO 14001**

Certified Quality Management  
**AQAP-2110**

Certified Quality Management  
**EN 9100**

## Rohde & Schwarz training

[www.training.rohde-schwarz.com](http://www.training.rohde-schwarz.com)

## Rohde & Schwarz customer support

[www.rohde-schwarz.com/support](http://www.rohde-schwarz.com/support)

